

# BASKET ROTATOR FRAME INSPECTION

12-5-2016

**Technical service bulletin:** SB160414(A)  
**Aim:** Increase safety awareness and provide additional maintenance and inspection data  
**Applicable:** GMJ units manufactured from June 2007 that have a basket rotator (Hydraulic rotator actuator type – ‘Helac’ brand).

## Background

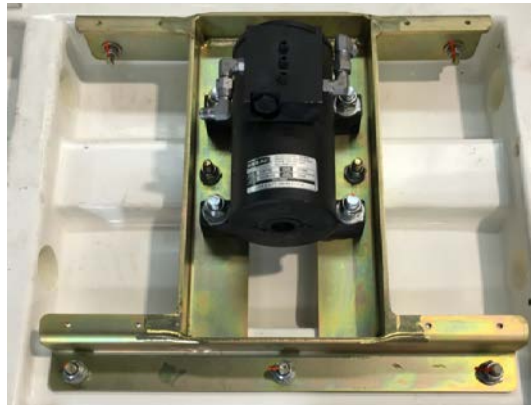
GMJ has become aware of an incident where a basket rotator frame has cracked.

The basket rotator frame is mounted between the basket and the hydraulic rotary actuator and is used to connect the basket to the rotary actuator.

## Inspection

**NOTE:** This inspection procedure should be conducted at every 3 monthly service interval.

1. Identify that the unit is fitted with the ‘Helac’ style basket rotary actuator located at the basket mount. This can be identified by the black hydraulic rotary actuator connected to the gold ‘H’ shaped frame as shown below.



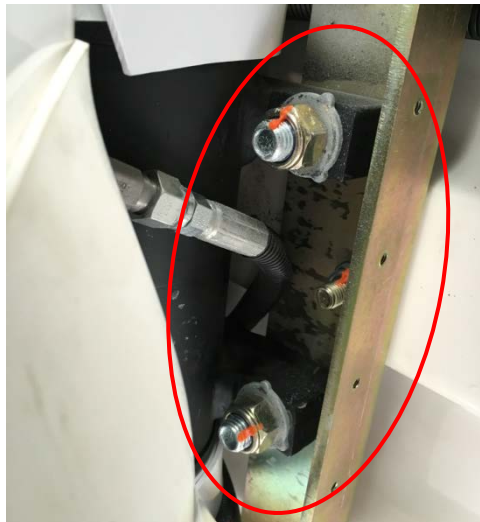
2. Once the unit has been identified with a hydraulic rotary actuator, an inspection of the frame should be performed.
3. Remove the basket frame covers secured with 8 nylon bolts



4. Remove the basket rotator cover bolts secured by 8 nylon bolts

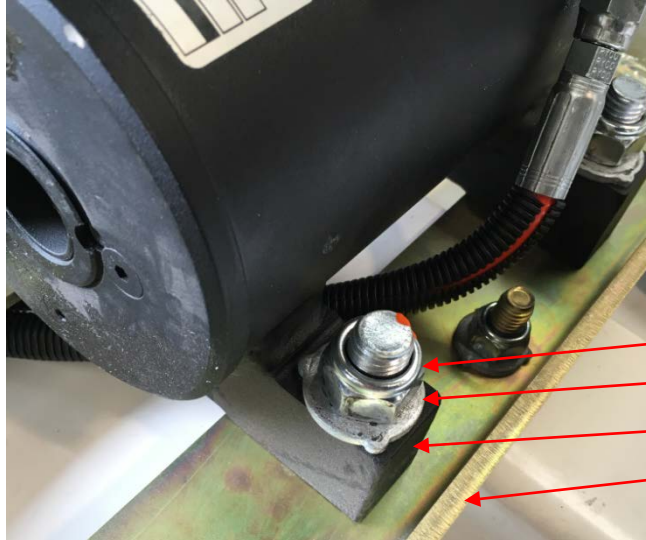


5. Visually inspect the basket rotator frame and fasteners for structural integrity. Pay particular attention to the area where the rotary actuator connects to the basket frame. Visually inspect the frame for:
  - Damage or cracks; particularly on the frame surface near the actuator foot
  - Distortion
  - Inspect where the rotary actuator foot mounts attach to the frame. Ensure these have not 'dug in' to the frame
  - Using a mirror or similar, inspect **behind** the frame between the basket and the frame. Note: It is necessary to inspect behind the frame in the vicinity of the bolts.

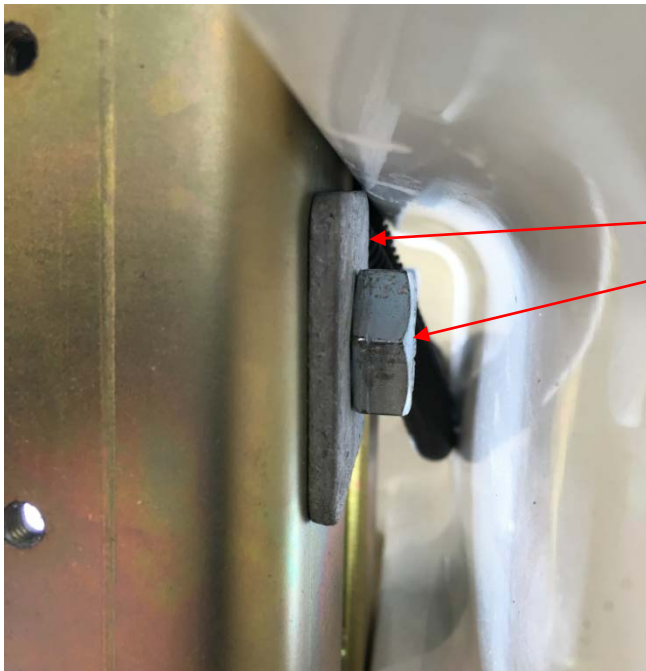


**If cracking is evident, the unit should be withdrawn from service.**

Note: If the frame connecting the rotary actuator is found to have round washers in place of square washers, as a matter of precaution it is recommended the round washers are replaced at the next scheduled inspection with square washers available from GMJ Equipment.



- NYLOC NUT
- STRUCTURAL WASHER
- ROTARY ACTUATOR
- BASKET FRAME



- SQUARE WASHER
- M16 BOLT