



Proudly Australian made & owned



# LL10.135

## TECHNICAL SPECIFICATION & FEATURES



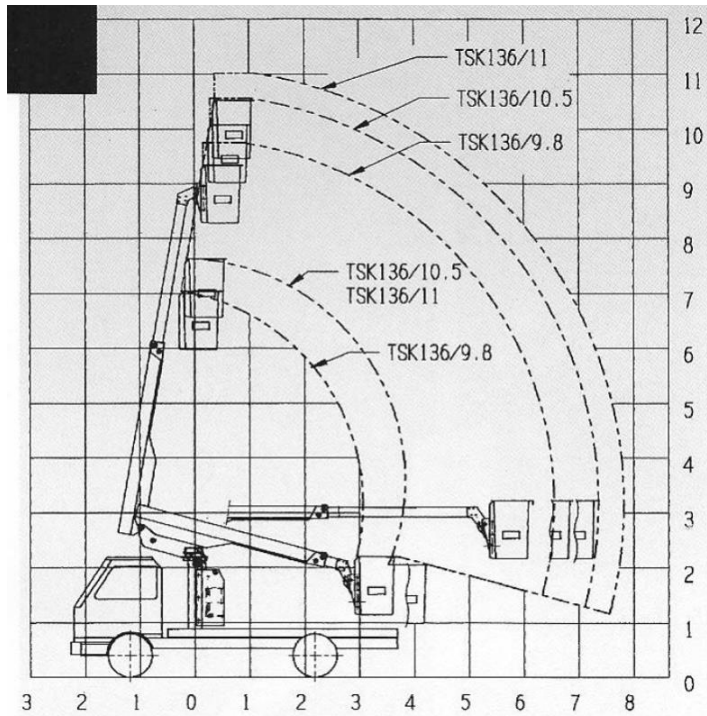
## INTRODUCTION

The LL10.135 features a compact boom design incorporating zero tail swing, 360° continuous rotation and up/down stabilisers, making this model ideal for working in high density traffic or restricted work areas. This model features a 135kg single man basket, working height of 11 meters and also includes a 33kv chassis insulator and 66kv upper boom insert.



*For more information please visit [www.gmj.com.au](http://www.gmj.com.au)  
Proudly designed and manufactured in Australia*

# TECHNICAL SPECIFICATION & FEATURES



## OPERATING SPECIFICATION

Model	LL10-135
Boom configuration type	Telescopic
Safe working load	135 kg
Basket construction	Fibreglass - Flame retardant to ASTM D635
Working height	11.0 m
Floor height	9.5 m
Reach	8.0 m
Relevant conformance standard	AS/NZS 1418.10:2011 – Mobile elevating work platforms
Cab chassis requirement	4.2 m, 7,300 kg GVM
Mass of unit includ. tray body	3,000 kg – Approx
Travel height	3.0 m - Approx

## OPERATING SPECIFICATION CONT.

### → INSULATION SPECIFICATION

Chassis insulation rating	33 kV - Dry	S
Basket operator insulation rating	66 kV - Dry	S
Chassis insulation effective length	0.5 m	
Basket operator insulation effective length	0.69 m	
Low voltage insulation	All metallic portions about 4.5 m	

### → STABILISATION

Front type	Hydraulic up/down	
Rear type	Hydraulic up/down	
Spring lockouts	No requirement for stabiliser legs to be deployed. Allows restricted slew from the stowed position	O
Automatic stabilisation	Automatic stow/engage & level at the touch of a button	O
Max. stabiliser spread	2.5 m	
Ground penetration	0.30 m	S
	0.40 m	X
Max. operating chassis slope	± 5°	
Max. stabiliser load	60 kN (6,000 kg) – Per pad	
Max. operating wind speed	12.5 m/s (45 km/h)	
Level indicators	3 off visible at stabiliser controls	S

### → BOOM PERFORMANCE

Slew	Continuous 360°
Lower boom	-15° → 80°
Extension boom	2.4 m stroke

### → BOOM SPEEDS

Slew ±360°	90 – 100 sec
Lower boom – Raise/lower	35 – 45 sec
Extend – In/out	20 – 30 sec

# TECHNICAL SPECIFICATION & FEATURES

## OPERATING SPECIFICATION CONT.

→ SAFETY FEATURES		
Emergency stops	Emergency stops located at all control locations with indication light to illustrate when active	S
Over centre valves	O/centre valves fitted to all cylinders to prevent unintended movement in the unlikely event of hydraulic hose failure	S
Basket tilt	Basket tilt function to allow retrieval of injured personnel in the event of emergency use	S
Boom/Stabiliser interlock	Boom/stabiliser interlock to prevent the operation of the booms without the stabilisers safely engaged	S
Basket tie down interlock	Prevents the ability to pack up the stabiliser legs unless the basket is correctly tied down and the boom fully stowed	O
Back-up retrieval systems	Auxiliary manual controls located at the base	S
	Electro-hydraulic power pack	S
	Hand pump back-up for all booms and stabilisers	S
	Manual bleed down screws fitted to cylinders for manual retrieval	S
	Controlled decent devices fitted to the basket for each operator	S

## FACTORY OPTIONS

### FACTORY OPTIONS

→ MOTION CONTROLS		
Basket controls	Pilot pressure joystick	S
	Single pistol grip	O
→ Radio remotes (Single)	Autec	O
→ Radio remotes (Dual)	Remote option also available in dual controls	O
Basket slew control	Inbuilt into remote & base control	O
Auxiliary base controls	Manual controls located at the pivot frame	S
	Spool positioning	O

## FACTORY OPTIONS CONT.

Stabiliser controls	Location customer specific	S
Engine stop / start	Located at the basket & pivot frame (other locations avail.)	S
→ BASKET		
Basket construction	Fibreglass - Flame retardant to ASTM D635	S
	Non-slip grit type on internal/external access steps	S
Basket size (internal)	0.9 m (wide) x 0.7 m (long) x 1.0 m (high)	S
Basket articulation	0° - Fixed	S
Basket accessories	Ribbed vinyl basket cover	O
	Fibreglass removable tool tray	O
→ HYDRAULICS		
Hydraulic circuit	Closed centre	O
	Open centre	S
Hydraulic operating pressure	17 MPa	S
Hydraulic pilot pressure	3.5 MPa	S
PTO & Pump (Gear type)	Single displacement - Single (Closed centre)	S
	Single displacement - Tandem (Hydraulic tools)	O
Accumulator size (Closed centre)	37L	S
	50L	O
Hydraulic tank	85L - Capacity	S
	Sight glass with temperature gauge	S
Pressure filter	10 micron	S
	3 micron	O
Return filter	10 micron	S
Hydraulic oil related options	Water separator	O
	Oil cooler radiator with fan	O
	Temperature alarm	O

## FACTORY OPTIONS

FACTORY OPTIONS CONT.		
→ <b>HYDRAULIC TOOLS</b>		
Fitting type	Flush face	O
	Bayonet	O
Intensifier	Located at the basket	O
Hydraulic tools pressure filter	10 micron (Standard on Open Centre circuit)	O
	3 micron	O
→ <b>MOTION ALARMS &amp; INTERLOCKS</b>		
Slew interlock	Single side operation with stabilisers retracted one side	X
Capacity interlock	Telescopic function restricted with stabiliser legs retracted and engaged	X
Traffic alarm	Warning buzzer when boom moves into traffic area	X
Out of level alarm	Buzzer active when chassis is greater than $\pm 5^\circ$ in either plane	O
Remote holder alarm	Buzzer active when radio remotes are not in holder when PTO is deactivated	O
→ <b>BODY DETAIL</b>		
Tray deck	Chequer plate - Steel	S
	Grid mesh - Steel	O
	Aluminium clip-lock	O
Deck access	Fixed step	S
	Single fold up step	O
	Double fold up steps	O
	Fold up steps/ladder	O
Mud guards	Steel	S
	Aluminium (Tray deck material dependant)	S
	Plastic bolt on	O
→ <b>BODY LIGHTING</b>		
Side clearance lights	LED type, 2 places	S
	LED type, 4 places	O

FACTORY OPTIONS CONT.		
Tail lights	LED type	S
Number plate light	LED type	S
Revolving lights	LED beacon – Small / large	O
	Strobe	O
	LED flasher	O
	Customer specified	O
Work lights	LED spot light	O
	LED spread light	O
	LED spot/spread light combination	O
Arrow light	Remote LED search light	O
	LED arrow stick	O
	Single arrow – Swing over	O
	Double ended arrow	O
	Arrow board - Type A (LED)	O
	Arrow board - Type B (LED)	O
Locker lights	Oyster light - LED	O
	LED strip	O
Step lights	LED type - Fitted to all access step areas	O
→ <b>INDICATION LIGHTING</b>		
Exterior indication lighting	Boom not stowed	S
	Basket not tied down	O
	Stabiliser legs out	S
	Stabiliser legs engaged	S
	Emergency stop active	S
	Boom stow light – Located on pivot frame	O

## FACTORY OPTIONS

FACTORY OPTIONS CONT.		
Cabin indication lighting	PTO Engaged	S
	PTO / truck hour meter	S
	Stabiliser not stowed	S
	Boom not stowed	O
	Step/vice not stowed	O
	Locker door open	O
	Pressure filter clogged (indicator on filter as standard)	O
	Return filter clogged	O
	Step lights on	O
→ <b>POWER MANAGEMENT</b>		
Dual batteries	Dual battery system	S
Battery management	Autonomous management system of the dual batteries, includes a start assist button in the cab for additional truck cranking power	O
Inverter	Customer specified	O
→ <b>TOW BAR</b>		
Type	Pintle	O
	Pintle & ball	O
Capacity	4,500 kg	O
	8,000 kg	O
Height	Customer specific	-
Plug	7 pin round - Small	O
	7 pin round - Large	O
→ <b>PAINT &amp; FINISHING</b>		
	All components painted using 2 pack paint	S
Booms	Polished GRP - White	S
	Ultra reflective red/white diamond tape safety stripes at knuckle	S
→ Steel work	White gloss	S

FACTORY OPTIONS CONT.		
Tray body	Black gloss	S
→ Special	Special customer specific paint detail available	O
Hand rail	White gloss	S
	Yellow gloss	O
Access steps	White gloss	S
	Yellow gloss	O
Stabiliser legs	White gloss	S
	Ultra reflective red/white diamond tape safety stripe	S
Oil tank	White gloss	S
Boom rest	Black gloss	S
Basket	Ultra reflective red/white diamond tape safety stripe	S
Access steps	Non-slip grit strip on all steps	S

## FACTORY FITTED ACCESSORIES

FACTORY FITTED ACCESSORIES		
→ <b>LOCKERS</b>		
Material	White powder coat 1.6 mm zinc anneal construction with field proven design to prevent water ingress	S
	3 mm aluminium, powder coated or raw	O
Internals	Fully customisable to customer specification	-
Features	Stainless steel lockable T-handles	S
	Stainless steel hinges	S
	Roller doors	O
Options	Central locking	O
	Hydraulic lift door	O
→ <b>ALTERNATIVE STORAGE</b>		
	Sign racks, ladder racks, rubbish bins, roof protector etc can be fitted as per customer specification	O

# FACTORY FITTED ACCESSORIES

## FACTORY FITTED ACCESSORIES CONT.

### → CAB CHASSIS ACCESSORIES

Operator terminal	In cab operator terminal screen:	O
	▪ Control MEWP functions and accessories	
	▪ Live monitoring & data logging	
	▪ Diagnose & fault-finding tool	
	▪ Service information & reminders	
	▪ Plant certificates & manuals	
	▪ Trouble shooting menu	
Tyre pressure management	A central tyre inflation system which allows the operator to control and monitor the air pressure in the tyres	O

### → MISCELLANEOUS ACCESSORIES

Stabiliser pads	Timber with rope grab handle	O
	Plastic moulded	O
Fire extinguisher	Wet - 9.0 kg	O
	Dry - 4.5 kg	O
	Dry - 9.0 kg	O
Water tank	15L including soap dispenser	O
	50L	O
Witches hat holder	On deck or under deck	O
Vice	100 mm fixed or slide out engineer's vice	O
Knap sack	16L with holder	O
	20L with holder	O
Cable drum carrier	Electroplated, 100 kg SWL	O
Recovery points	Rear recovery hooks	O
Spare wheel carrier	On deck or under deck	O
Wheel chocks	Rubber complete with grab handle and holder	O
Earth chain	16 mm chain link	O
Oil tank drain cock	Mounted to either side of the tray body	O
Spill kit	Oil & fuel spill kit supplied loose	O

Please contact GMJ Equipment regarding options not listed in this document

GMJ Equipment Pty Ltd  
32 – 34 Quality drive, Dandenong South 3175  
Victoria, Australia

P: (+613) 9706 4550  
W: [www.gmj.com.au](http://www.gmj.com.au)  
E: [reception@gmj.com.au](mailto:reception@gmj.com.au)



Version August 2018

All information in this document is correct at the time of publication, however variations may occur. GMJ Equipment, in so far as it is permitted by law to do so, shall not be liable in any way as a result of any reliance by any person on anything contained in this brochure. GMJ Equipment will provide upto-date information on model application, design features, prices and availability on request.