

# THE WINNING COMBINATION

GMJ / Prinoth is proud to introduce its range of all terrain mobile elevated work platform.

**G**MJ Equipment has recently delivered the latest in Australian mobile elevated work platform design – an all terrain, live line elevated work platform for Powercor Australia. This unit has been designed for live line maintenance within the muddy and swampy conditions of the south western region of Victoria where regular methods of access are extremely difficult and time consuming.

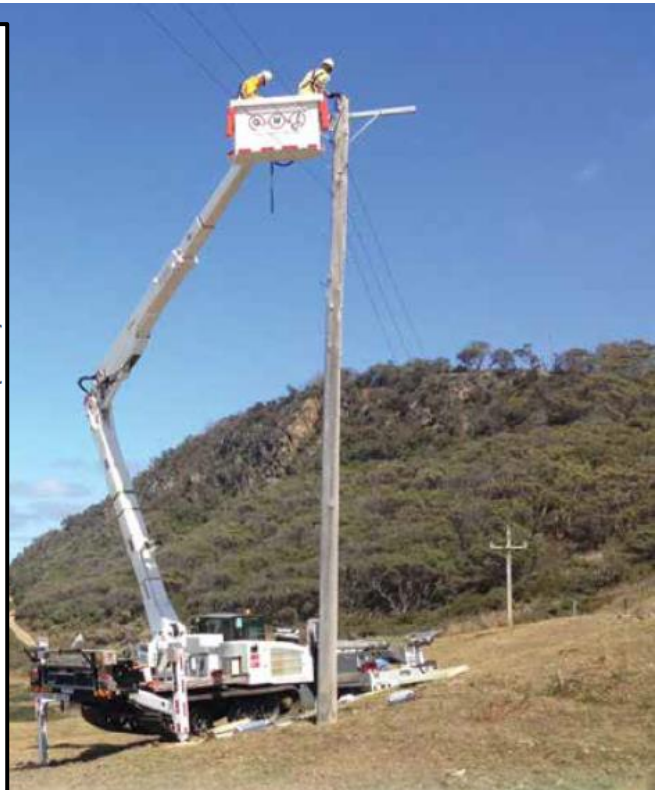
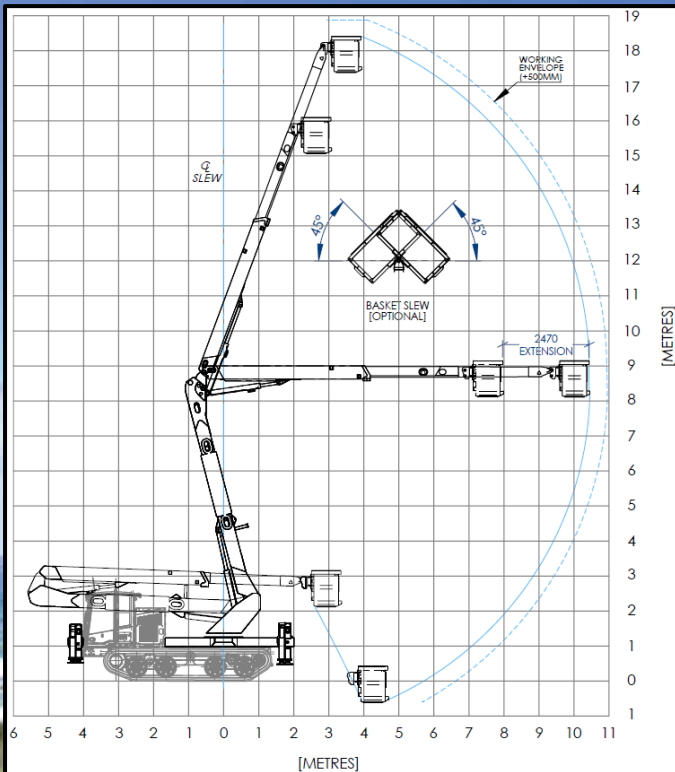
Any type of project in this area would normally involve extensive earthworks and manpower to get equipment into

and out of the job site. The extra high stabiliser legs allow the unit to be set up on ground slopes which exceed normal operating conditions. Dramatically improving job efficiency, allowing safe access to and from job sites, and reducing the damage inflicted on the land, the GMJ/Prinoth tracked unit has become an essential tool.

Due to the huge success of this unit, GMJ has received an additional five orders, two of which are for Australia's largest tree clearing service provider, Eastern Tree Services. GMJ is also working closely with another Australian manufacturer to provide a Prinoth/ pole borer combination for the power







GMJ MODEL LL18.650	PRINOTH PANTHER T8 TRACKED CARRIER
20m working height	2,500mm wide unit
11.5m reach	Endless rubber tracks with high traction tread and automatic tensioning system
132/33/LV Dry, 33/33/LV Wet insulation rating	Double tandem suspension for better off-road capability
350kg SWL	Caterpillar C7.1 Tier 4 engine
650kg combined SWL	Conditional registration for road use, transportable on a low loader with no restrictions



construction and maintenance industry.

The superior design of the Prinoth carrier combined with the field proven design of the GMJ LL18.650 MEWP proves to be a winning combination.

GMJ Equipment is recognised within the industry as being an established manufacturer of Australian made elevated work platforms for more than 30 years. A unique quality is that GMJ works with the client to tailor design the features required based on the needs, work conditions and application. GMJ is also proud to be the newly appointed authorised distributor of Prinoth tracked carriers throughout Australia.

#### Cela un-insulated mobile elevated work platforms

Cela un-insulated self propelled spyders are available ex-stock in Melbourne, complete with galvanised trailer manufactured in our workshop.

The fully telescopic and proven design

complies to the Australian standard AS/NZS 1418.10:2011.

The compact design provides a high degree of access, being able to be driven through a standard doorway with the basket removed, and with rubber tracks, leaving no damage to the surface below.

The spyder range features a petrol engine for outdoor use, with the option of 240V standard plug for pollution free, no noise, indoor use.

#### Customised body work and tippers

GMJ Equipment has expanded its manufacturing diversity to include customised body work, lockers and tray bodies. Standardised packages can be produced to suit the customer's requirements. Their latest tipper range are built with a stainless steel lining and come with a five-year corrosion free guarantee.

**For more information call GMJ on (03) 9706 4550 or visit [www.gmj.com.au](http://www.gmj.com.au)**





EQUIPMENT PTY LTD

Proudly Australian made & owned

