

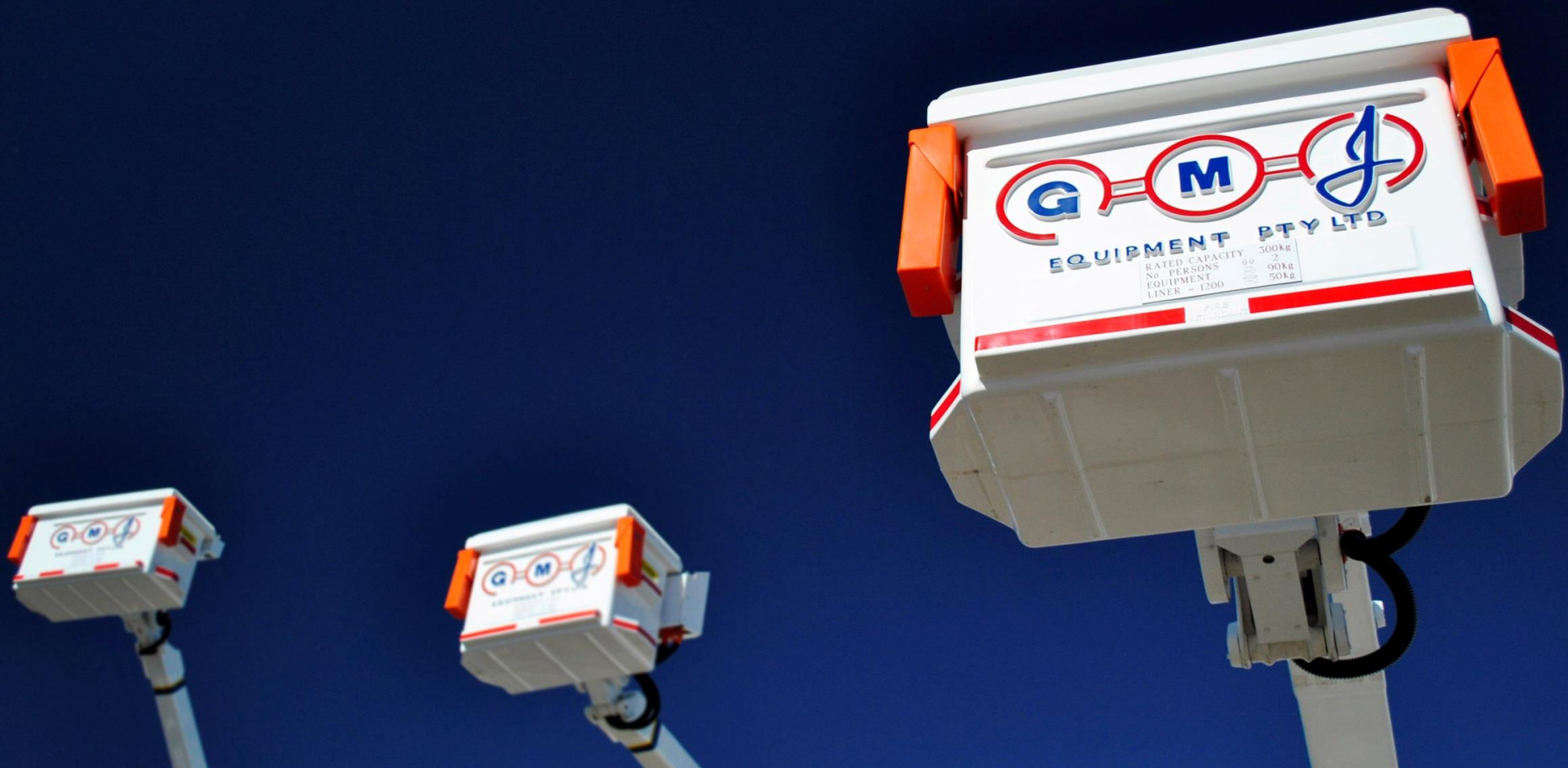


Proudly Australian made & owned



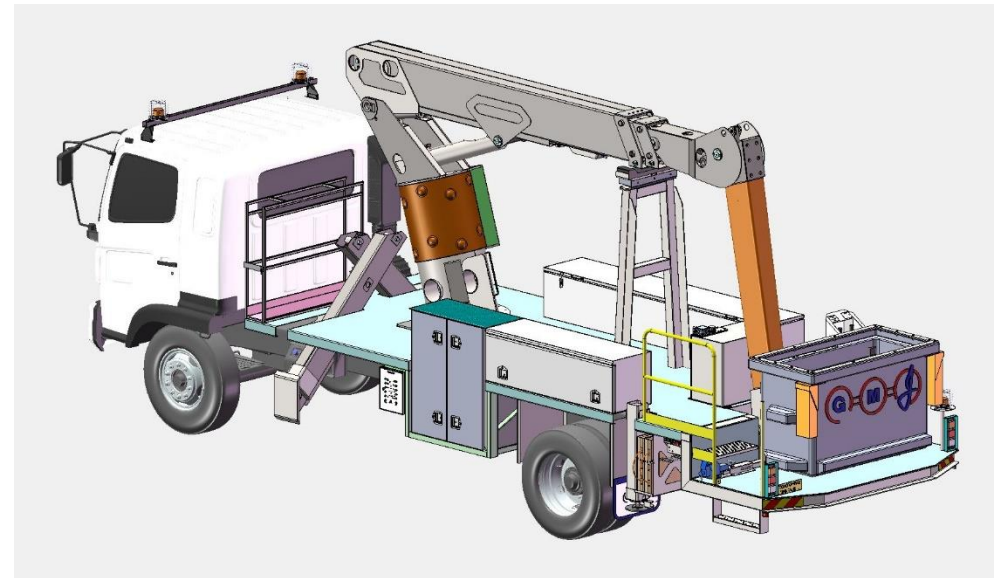
TTF17.300

TECHNICAL SPECIFICATION & FEATURES



Functionality and reliability in one practical package

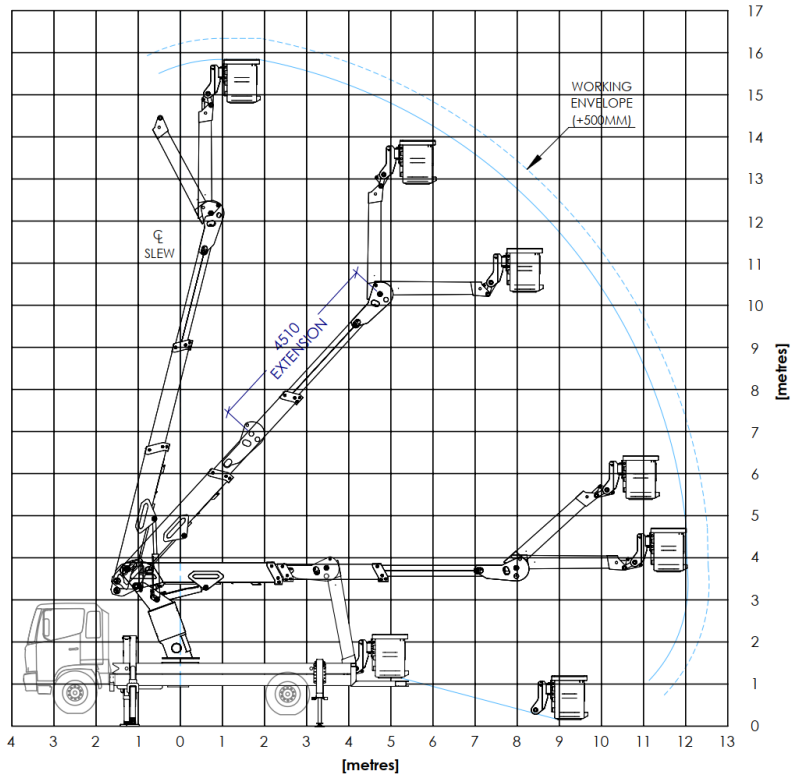
- Zero tail swing for efficient traffic management
- Superior reach – 12.7m including 135° fly boom rotation
- Compact boom design, maximising manoeuvrability around powerlines and trees, and suited to a short wheelbase cab chassis
- A light weight but robust construction, standing up to the demanding Australian conditions
- Designed and constructed using the latest in MEWP technology
- 90% Australian made



For more information please visit www.gmj.com.au

Proudly designed and manufactured in Australia

TECHNICAL SPECIFICATION & FEATURES



OPERATING SPECIFICATION		
Model	TTF17-300	
Boom configuration type	Telescopic / fly (Zero tail swing)	
Safe working load	250 kg	S
→ With basket rotator	250 kg	O
Basket construction	Fibreglass - Flame retardant to ASTM D635	
Working height	17.0 m	
Floor height	15.0 m	
Reach	12.7 m	
Relevant conformance standard	AS/NZS 1418.10:2011 – Mobile elevating work platforms	
Cab chassis requirement (min.)	4.5 m, 13,000 kg GVM	

OPERATING SPECIFICATION CONT.

Mass of unit include. tray body	5,800 kg – Approx.	
Travel height	3.75 m – Approx.	

→ INSULATION SPECIFICATION

Chassis insulation rating	33 kV - Dry	S
	33 kV - Wet	O
Basket operator insulation rating	132 kV - Dry	S
	66 kV - Wet	O
Chassis insulation effective length	0.5 m	
Basket operator insulation effective length	2.0 m	
Low voltage insulation	All metallic portions about 4.5 m	

→ STABILISATION

Front type	Hydraulic in/out – up/down	S
	Hydraulic A-frames	O
Rear type	Hydraulic up/down	S
Spring lockouts	No requirement for stabiliser legs to be deployed. Allows restricted slew from the stowed position	O
Automatic stabilisation	Automatic stow/engage & level at the touch of a button	O
Max. stabiliser spread	3.8 m	
Ground penetration	0.25 m	S
	0.40 m	O
Max. operating chassis slope	± 5° Both directions	
Max. stabiliser load	100 kN (10,000 kg) – Per pad	
Max. operating wind speed	12.5 m/s (45 km/h)	
Level indicators	3 off visible at stabiliser controls	S

→ BOOM PERFORMANCE

Slew	Continuous 360°	
Lower boom	-6° → 70°	
Extension boom	4.51 m extension	
Fly boom	135° Rotation	
Basket	150° Rotation	O

TECHNICAL SPECIFICATION & FEATURES

OPERATING SPECIFICATION CONT.		
→ BOOM SPEEDS		
Slew ±360°	90 – 100 sec	
Lower boom – Raise/lower	35 – 45 sec	
Extend – In/out	30 – 35 sec	
Fly boom – Raise/lower	20 – 25 sec	
→ SAFETY FEATURES		
Emergency stops	Emergency stops (3 off) located at all control locations with indication light to illustrate when active	S
Over centre valves	O/centre valves fitted to all cylinders to prevent unintended movement in the unlikely event of hydraulic hose failure	S
Basket tilt	Basket tilt function to allow retrieval of injured personnel in the event of emergency use	S
Boom/Stabiliser interlock	Boom/stabiliser interlock to prevent the operation of the booms without the stabilisers safely engaged	S
Basket tie down interlock	Prevents the ability to pack up the stabiliser legs unless the basket is correctly tied down and the boom fully stowed	O
Back-up retrieval systems	Base manual controls located at the turret	S
	Electro-hydraulic emergency power pack	S
	Hand pump back-up for all booms and stabilisers	S
	Manual bleed down screws fitted to cylinders for manual retrieval	S
	Controlled decent devices fitted to the basket for each operator	S

FACTORY OPTIONS

FACTORY OPTIONS		
→ MOTION CONTROLS		
Basket controls		
→ Radio remotes (Single)	Autec – Basket	S
→ Radio remotes (Dual)	Autec – Basket / Base	O
→ Pilot	Joystick – 2 off	O
→ Single pistol grip	Single hand operation pistol grip	O

FACTORY OPTIONS CONT.		
Basket slew control	Inbuilt into the radio remote at the basket controls	O
Base controls	Rexroth proportional electro-hydraulic valve at the pivot frame	S
	Emergency controls located at the tray level	O
	Spool positioning	O
Stabiliser controls	Location customer specific	S
Engine stop / start	Located at the basket, pivot frame, and tray level	S
→ BASKET		
Basket construction	Fibreglass - Flame retardant to ASTM D635	S
	Non-slip grit type on internal/external access steps	S
Basket size (internal)	1.2 m (wide) x 0.7 m (long) x 1.0 m (high)	S
	1.5 m (wide) x 0.7 m (long) x 1.0 m (high)	O
Basket articulation	0° - Fixed	S
	150° - Helical rotary actuator	O
Basket liner	Flame retardant to ASTM D635 - Includes 2 internal access steps	O
Basket accessories	Lifting jib attachment - 150 kg SWL	O
	Ribbed vinyl basket cover	O
	Fibreglass removable tool tray	O
→ HYDRAULICS		
Hydraulic circuit	Open centre	S
	Closed centre	O
Hydraulic operating pressure	17 MPa	S
Hydraulic pilot pressure	3.5 MPa	S
PTO & Pump (Gear type)	Single or tandem	S
Accumulator size (Closed centre)	37L or 50L	O
Hydraulic tank	140L - Capacity	S
	Sight glass with temperature gauge	S

FACTORY OPTIONS

FACTORY OPTIONS CONT.		
Pressure filter	10 micron	S
	3 micron	O
Return filter	10 micron	S
Hydraulic oil related options	Water separator	O
	Oil cooler radiator with fan	O
	Temperature alarm	O
→ HYDRAULIC TOOLS		
Location	Basket and/or base	O
Fitting type	Flush face	O
Intensifier	Located at the basket	O
Hydraulic tools pressure filter	10 micron (Standard on Open Centre circuit)	O
	3 micron	O
→ MOTION ALARMS & INTERLOCKS		
Slew interlock	Single side operation with stabilisers retracted one side (Not applicable with A-frame stabilisers)	O
Out of level alarm	Buzzer active when chassis is out of level in either plane	O
Remote holder alarm	Buzzer active when radio remotes are not stored in their holder when PTO is deactivated	O
→ BODY DETAIL		
Tray deck	Steel chequer plate	S
	Aluminium chequer plate	O
	Aluminium clip-lock	O
Deck access	Fixed step	S
	Single fold up step	O
	Double fold up steps	O
Mud guards	Steel or Aluminium	S
	Plastic bolt on	O

FACTORY OPTIONS CONT.		
→ BODY LIGHTING		
Side clearance lights	LED type, 2 places	S
Tail lights	LED type	S
Number plate light	LED type	S
Revolving lights	LED beacon – Small / large	O
	LED Strobe	O
	LED flasher	O
	Customer specified	O
Work lights	LED spot light	O
	LED spread light	O
	LED spot/spread light combination	O
	Remote LED search light	O
Arrow light	LED arrow stick	O
	Single arrow – Swing over	O
	Double ended arrow	O
Locker lights	LED strip	O
Step lights	LED type	O
Deck lights	LED type	O
→ INDICATION LIGHTING		
Exterior indication lighting	Boom not stowed	S
	Basket not tied down	S
	Stabiliser legs out	S
	Stabiliser legs engaged	S
	Emergency stop active	S
	Boom stow light	S

FACTORY OPTIONS

FACTORY OPTIONS CONT.		
Cabin indication lighting	PTO Engaged	S
	MEWP / truck hour meter	S
	Stabiliser not stowed	S
	Boom not stowed	S
	Step/vice not stowed	S
	Locker door open	O
	Pressure filter clogged (indicator on filter as standard)	O
	Return filter clogged	O
	Step lights on	O
→ POWER MANAGEMENT		
Dual batteries	Dual battery system	S
Battery management	Autonomous management system of the dual batteries, includes a smart start assist button in the cab for additional truck cranking power	O
Inverter	Customer specified	O
→ TOW BAR		
Type	Pintle	O
	Pintle & ball	O
Capacity	4,500 kg	O
Height	Customer specific	-
Plug	7 pin round – Small or large	O
→ PAINT & FINISHING		
	All components painted using 2 pack paint	S
Booms	Polished GRP - White	S
	Ultra-reflective diamond tape safety stripes at knuckle	S
Steel work	White gloss	S
Tray body	Black gloss	S
Hand rail/Access steps	White gloss	S
	Yellow gloss	O

FACTORY OPTIONS CONT.

Stabiliser legs	White gloss	S
	Ultra-reflective diamond tape safety stripe	S
Basket	Ultra-reflective diamond tape safety stripe	S
Access steps	Non-slip grit strip on all steps	S

FACTORY FITTED ACCESSORIES

FACTORY FITTED ACCESSORIES

→ LOCKERS

Material	White powder coat 1.6 mm zinc anneal construction with field proven design to prevent water ingress	S
	3 mm aluminium, powder coated or raw	O
Internals	Fully customisable to customer specification	-
Features	Stainless steel lockable T-handles	S
	Stainless steel hinges	S
Options	Central locking	O
	Roller doors	O
	Hydraulic lift door	O

→ ALTERNATIVE STORAGE

	Sign racks, ladder racks, rubbish bins, roof protector etc can be fitted as per customer specification	O
--	--	---

FACTORY FITTED ACCESSORIES

FACTORY FITTED ACCESSORIES CONT.

→ CAB CHASSIS ACCESSORIES

	In cab operator terminal screen:	
	<ul style="list-style-type: none"> ▪ Control MEWP functions and accessories ▪ Live monitoring & data logging ▪ Diagnose & fault-finding tool ▪ Service information & reminders ▪ Plant certificates & manuals ▪ Trouble shooting menu 	
Operator terminal		O

Tyre pressure management	A central tyre inflation system which allows the operator to control and monitor the air pressure in the tyres	O
→ MISCELLANEOUS ACCESSORIES		
Stabiliser pads	Timber with rope grab handle	O
	Plastic moulded	O
Fire extinguisher	Wet - 9.0 kg	O
	Dry - 4.5 kg	O
	Dry - 9.0 kg	O
Water tank	15L including soap dispenser	O
	50L	O
Witches hat holder	On deck or under deck	O
Vice	100 mm fixed or slide out engineer's vice	O
Knap sack	16L with holder	O
Cable drum carrier	Electroplated, 100 kg SWL	O
Recovery points	Rear recovery hooks	O
Wheel chocks	Rubber complete with grab handle and holder	O
Earth chain	16 mm chain link	O
Oil tank drain cock	Mounted to either side of the tray body	O
Spill kit	Oil & fuel spill kit	O

Please contact GMJ Equipment regarding options not listed in this document

GMJ Equipment Pty Ltd
32 – 34 Quality drive, Dandenong South 3175
Victoria, Australia

P: (+613) 9706 4550
W: www.gmj.com.au
E: reception@gmj.com.au



Version: April 2020

All information in this document is correct at the time of publication, however variations may occur. GMJ Equipment, in so far as it is permitted by law to do so, shall not be liable in any way as a result of any reliance by any person on anything contained in this brochure. GMJ Equipment will provide upto-date information on model application, design features, prices and availability on request.